

**Model: ASNH508-607**

diameter of axle

$d_a$ :	30
---------	----

bearing block

A:	85
$A_1$ :	60
H:	108
$H_1$ :	60
$H_2$ :	25
J:	170
L:	205
N:	20
$N_1$ :	15
G:	12
quality:	2.9

model

Bearing seat with seals on both sides:	SNL607T S
Component bearing seat:	SNL508-607
seal components:	TSN607S
end cap:	ASNH508-607

diameter of axle

$d_a$ :	35
---------	----

Hole

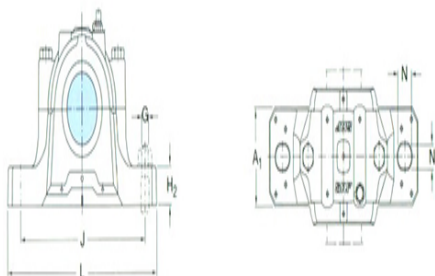
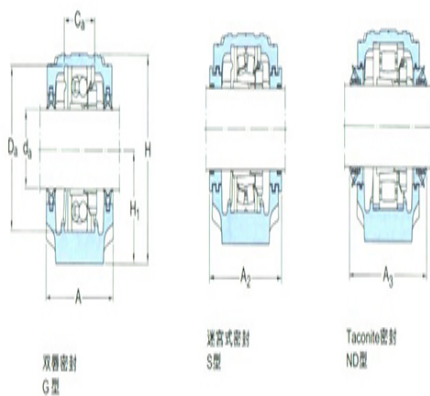
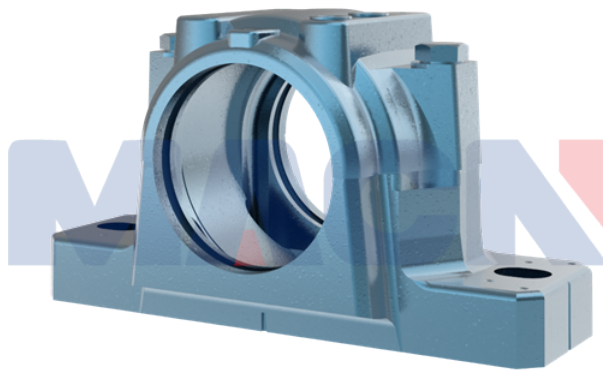
$C_a$ :	41
$D_a$ :	90

Total width of the attached seal

$A_2$ :	102
$A_3$ :	150

Applicable bearings and related parts

Automatic centering ball bearing:	21308CC
spherical roller bearing:	K



tapered adapter-sleeve:	H308
Positioning rings 2 per bearing seat :	FRB9/90
Automatic centering ball bearing spherical roller bearing CARB bearing:	22308EK
tapered adapter-sleeve:	H2308
Positioning rings 2 per bearing seat :	FRB4/90