

**Model: SNL512TS**

diameter of axle

$d_a$ :	55
---------	----

bearing block

A:	105
$A_1$ :	70
H:	134
$H_1$ :	70
$H_2$ :	30
J:	210
L:	255
N:	24
$N_1$ :	18
G:	16
quality:	5.1

model

Bearing seat with seals on both sides:	SNL512T S
Component bearing seat:	SNL512- 610
seal components:	TSN512S
end cap:	ASNH51 2-610

diameter of axle

$d_a$ :	
---------	--

Hole

$C_a$ :	
---------	--

$D_a$ :	
---------	--

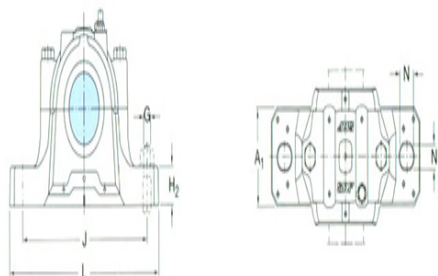
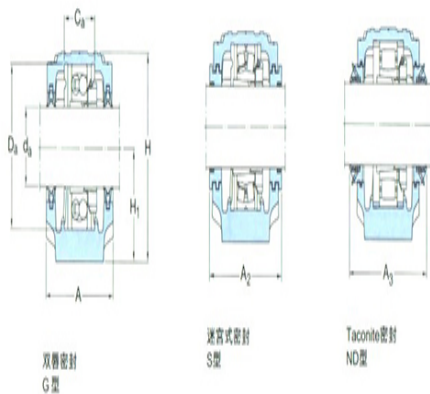
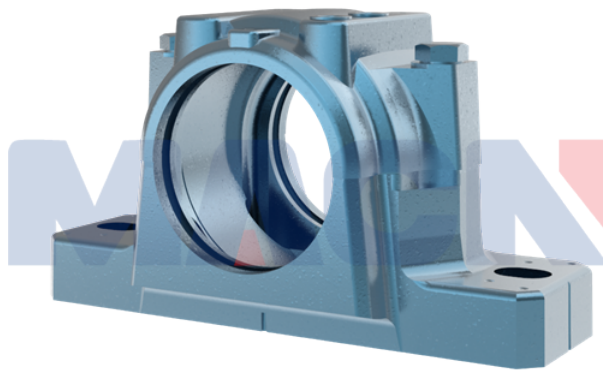
Total width of the attached seal

$A_2$ :	
---------	--

$A_3$ :	
---------	--

Applicable bearings and related parts

Automatic centering ball bearing
spherical roller bearing:



tapered adapter-sleeve :

Positioning rings

2 per bearing seat

:

Automatic centering ball

bearing

spherical roller bearing

CARB bearing:

tapered adapter-sleeve :

Positioning rings

2 per bearing seat

: