

Model: ASNH512-610

diameter of axle

d_a : 45

bearing block

A: 105

A_1 : 70

H: 134

H_1 : 70

H_2 : 30

J: 210

L: 255

N: 24

N_1 : 18

G: 16

quality: 5.1

model

Bearing seat with seals
on both sides: SNL610TN
D

Component
bearing seat: SNL512-
610

seal components: TSN610ND

end cap: ASNH512-
610

diameter of axle

d_a : 50

Hole

C_a : 51

D_a : 120

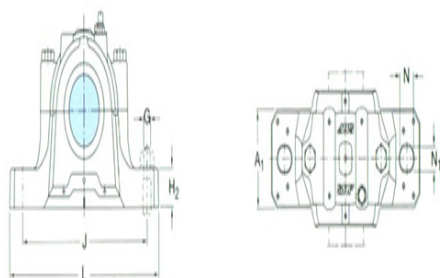
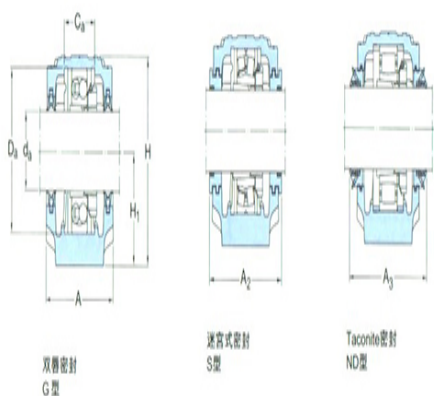
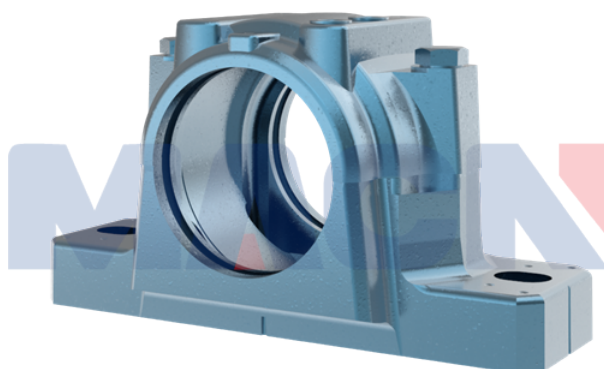
Total width of the attached seal

A_2 : 122

A_3 : 170

Applicable bearings and related
parts

Automatic centering
ball bearing 1311EK
spherical roller



bearing:	
tapered adapter-sleeve:	H311
Positioning rings	
2 per bearing seat	FRB11/120
:	
Automatic centering	
ball bearing	2311K
spherical roller bearing	
CARB bearing:	
tapered adapter-sleeve:	H2311
Positioning rings	
2 per bearing seat	FRB4/120
:	