

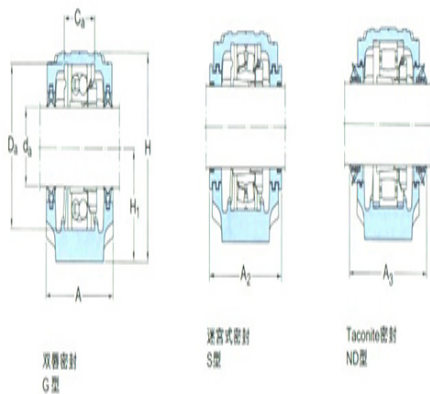
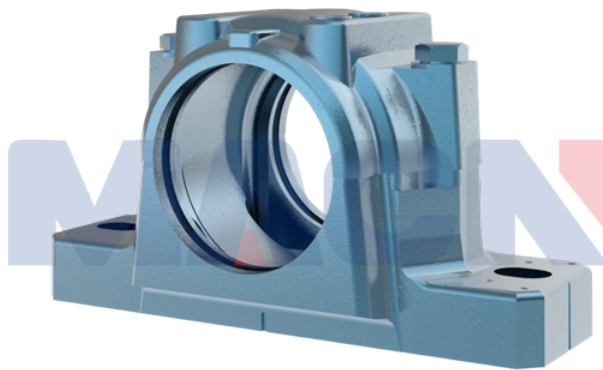
**Model: ASNH513-611**

diameter of axle

$d_a$ :	50
---------	----

bearing block

A:	110
$A_1$ :	80
H:	149
$H_1$ :	80
$H_2$ :	30
J:	230
L:	275
N:	24
$N_1$ :	18
G:	16
quality:	6.5



model

Bearing seat with seals on both sides:	SNL611TA
Component bearing seat:	SNL513-611
seal components:	TSN611A
end cap:	ASNH513-611

diameter of axle

$d_a$ :	55
---------	----

Hole

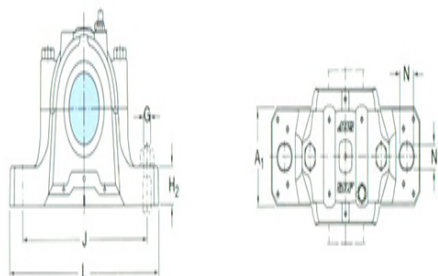
$C_a$ :	56
$D_a$ :	130

Total width of the attached seal

$A_2$ :	127
$A_3$ :	175

Applicable bearings and related parts

Automatic centering ball bearing	1312EK
spherical roller	



bearing:	
tapered adapter-sleeve:	H312
Positioning rings 2 per bearing seat :	FRB12.5/13 0
Automatic centering ball bearing spherical roller bearing CARB bearing:	2312K
tapered adapter-sleeve:	H2312
Positioning rings 2 per bearing seat :	FRB5/130