

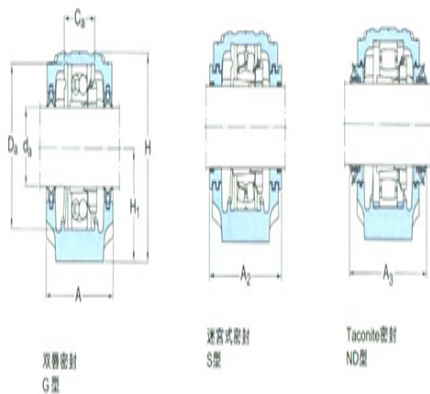
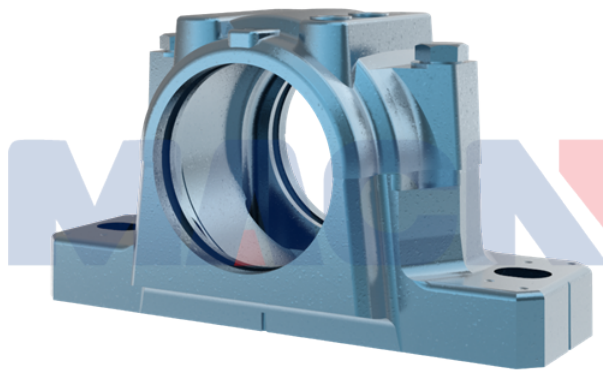
**Model: ASNH512-610**

diameter of axle

$d_a$ :	55
---------	----

bearing block

A:	105
$A_1$ :	70
H:	134
$H_1$ :	70
$H_2$ :	30
J:	210
L:	255
N:	24
$N_1$ :	18
G:	16
quality:	5.1



model

Bearing seat with seals on both sides:	SNL512T G
Component bearing seat:	SNL512- 610
seal components:	TSN512G
end cap:	ASNH512 -610

diameter of axle

$d_a$ :	
---------	--

Hole

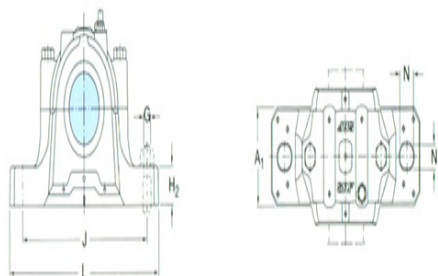
$C_a$ :	
$D_a$ :	

Total width of the attached seal

$A_2$ :	
$A_3$ :	

Applicable bearings and related parts

Automatic centering ball bearing	
spherical roller bearing:	



tapered adapter-  
sleeve:

Positioning rings  
2 per bearing seat  
:

Automatic centering ball  
bearing

spherical roller bearing  
CARB bearing:

tapered adapter-  
sleeve:

Positioning rings  
2 per bearing seat  
: