

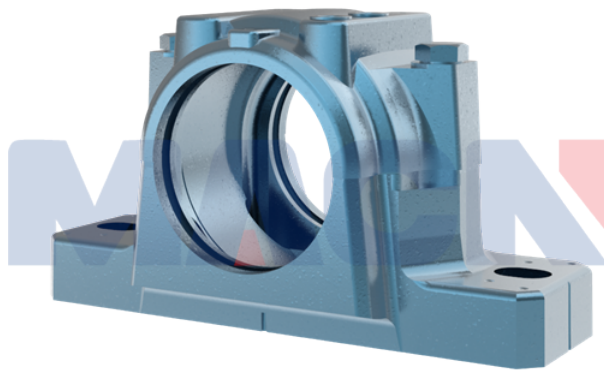
**Model: ASNH512-610**

diameter of axle

$d_a$ :	55
---------	----

bearing block

A:	105
$A_1$ :	70
H:	134
$H_1$ :	70
$H_2$ :	30
J:	210
L:	255
N:	24
$N_1$ :	18
G:	16
quality:	5.1



model

Bearing seat with seals on both sides:	SNL512T S
Component bearing seat:	SNL512-610
seal components:	TSN512S
end cap:	ASNH512-610

diameter of axle

$d_a$ :	
---------	--

Hole

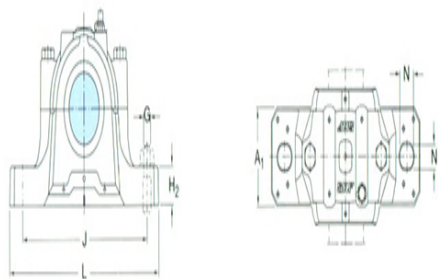
$C_a$ :	
$D_a$ :	

Total width of the attached seal

$A_2$ :	
$A_3$ :	

Applicable bearings and related parts

Automatic centering ball bearing	
spherical roller bearing:	



tapered adapter-sleeve :

Positioning rings

2 per bearing seat

:

Automatic centering ball

bearing

spherical roller bearing

CARB bearing:

tapered adapter-sleeve :

Positioning rings

2 per bearing seat

: