

Model: ASNH513-611

diameter of axle

d_a : 60

bearing block

A: 110

A_1 : 80

H: 149

H_1 : 80

H_2 : 30

J: 230

L: 275

N: 24

N_1 : 18

G: 16

quality: 6.5

model

Bearing seat with seals
on both sides: SNL513T
A

Component
bearing seat: SNL513-
611

seal components: TSN513A

end cap: ASNH513
-611

diameter of axle

d_a : 60

Hole

C_a : 51

D_a : 120

Total width of the attached seal

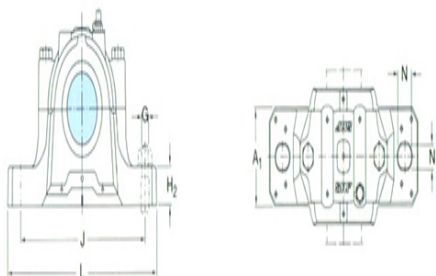
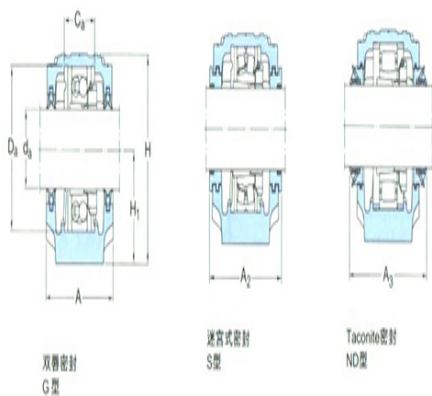
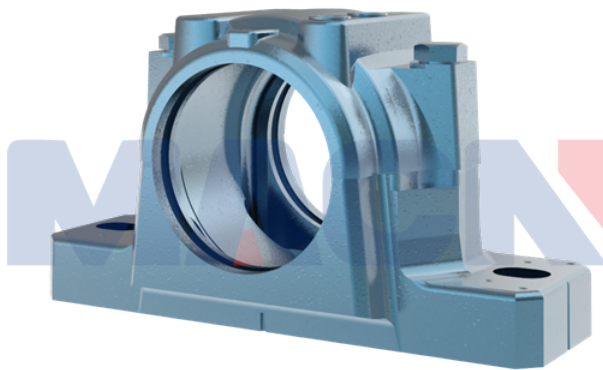
A_2 : 122

A_3 : 180

Applicable bearings and related
parts

Automatic centering ball
bearing -

spherical roller



bearing:	
tapered adapter-sleeve:	-
Positioning rings	
2 per bearing seat	-
:	
Automatic centering ball bearing	
spherical roller bearing	22213EK
CARB bearing:	
tapered adapter-sleeve:	H313
Positioning rings	
2 per bearing seat	FRB10/12
:	0