

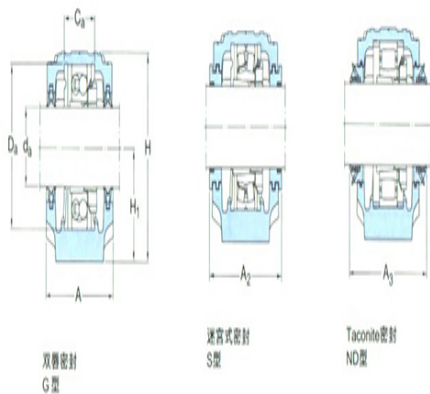
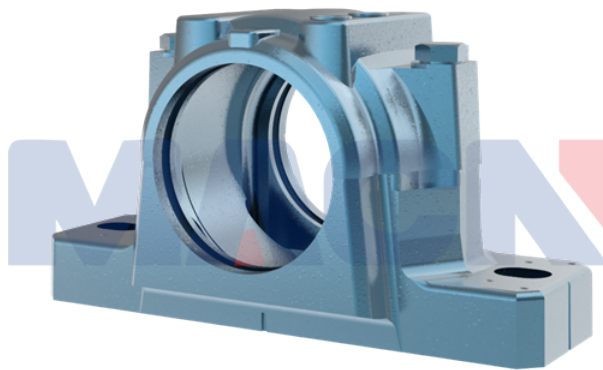
**Model: ASNH513-611**

diameter of axle

$d_a$ :	60
---------	----

bearing block

A:	110
$A_1$ :	80
H:	149
$H_1$ :	80
$H_2$ :	30
J:	230
L:	275
N:	24
$N_1$ :	18
G:	16
quality:	6.5



model

Bearing seat with seals on both sides:	SNL513TS
Component bearing seat:	SNL513-611
seal components:	TSN513S
end cap:	ASNH513-611

diameter of axle

$d_a$ :	60
---------	----

Hole

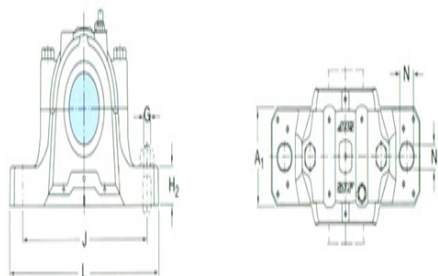
$C_a$ :	51
$D_a$ :	120

Total width of the attached seal

$A_2$ :	122
$A_3$ :	180

Applicable bearings and related parts

Automatic centering ball bearing	-
spherical roller	-



bearing:	
tapered adapter-sleeve:	-
Positioning rings	
2 per bearing seat	-
:	
Automatic centering ball bearing	
spherical roller bearing	C2213K
CARB bearing:	
tapered adapter-sleeve:	H313E
Positioning rings	
2 per bearing seat	FRB10/12
:	0