

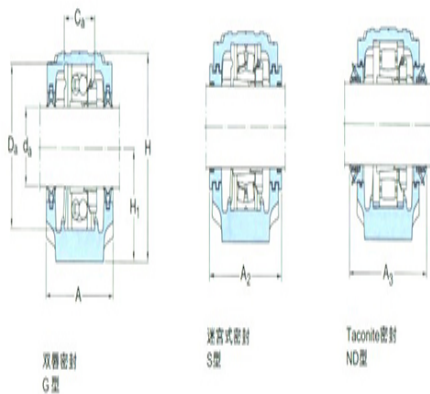
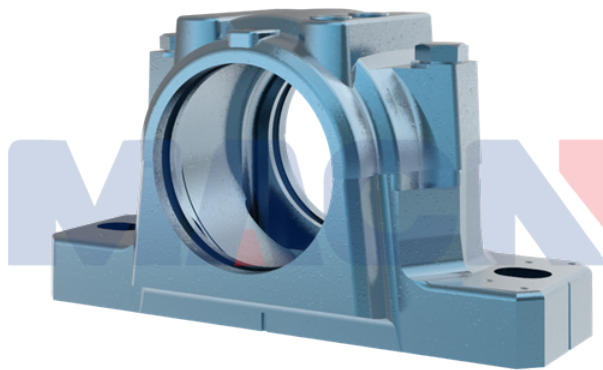
Model: ASNH516-613

diameter of axle

d_a :	70
---------	----

bearing block

A:	120
A_1 :	90
H:	177
H_1 :	95
H_2 :	32
J:	260
L:	315
N:	28
N_1 :	22
G:	20
quality:	9.5



model

Bearing seat with seals on both sides:	SNL516TN D
Component bearing seat:	SNL516-613
seal components:	TSN516ND
end cap:	ASNH516-613

diameter of axle

d_a :	75
---------	----

Hole

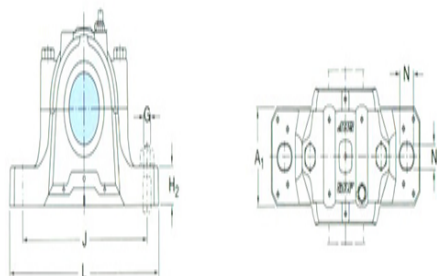
C_a :	61
D_a :	150

Total width of the attached seal

A_2 :	143
A_3 :	210

Applicable bearings and related parts

Automatic centering ball bearing	-
spherical roller	-



bearing:	
tapered adapter-sleeve:	-
Positioning rings	
2 per bearing seat	-
:	
Automatic centering	
ball bearing	22217EK
spherical roller bearing	
CARB bearing:	
tapered adapter-sleeve:	H317
Positioning rings	FRB12.5/15
2 per bearing seat	0
:	