

Model: SNL519TA

diameter of axle

d_a :	85
---------	----

bearing block

A:	145
A_1 :	100
H:	212
H_1 :	112
H_2 :	35
J:	290
L:	345
N:	28
N_1 :	22
G:	20
quality:	13.7

model

Bearing seat with seals on both sides:	SNL519T A
Component bearing seat:	SNL519- 616
seal components:	TSN519A
end cap:	ASNH519 -616

diameter of axle

d_a :	85
---------	----

Hole

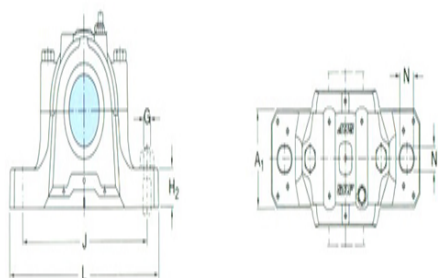
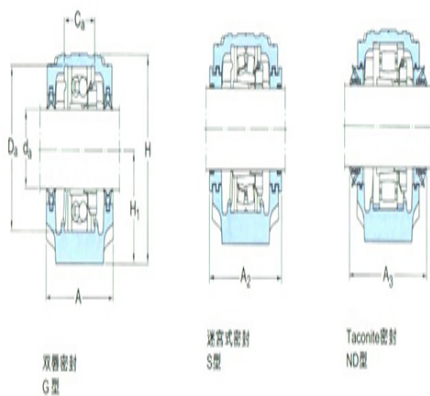
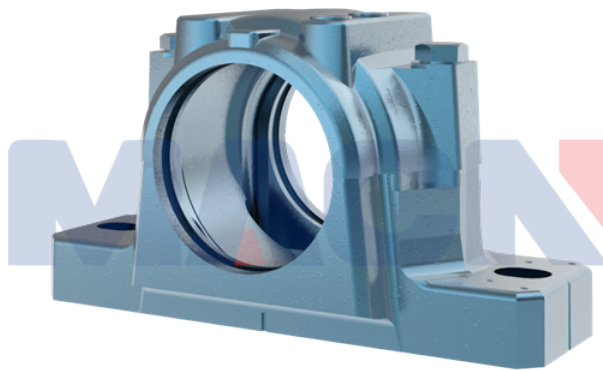
C_a :	68
D_a :	170

Total width of the attached seal

A_2 :	163
A_3 :	220

Applicable bearings and related parts

Automatic centering ball bearing	-
spherical roller bearing:	



tapered adapter-sleeve:	-
Positioning rings	
2 per bearing seat	-
:	
Automatic centering ball bearing	
spherical roller bearing	-
CARB bearing:	
tapered adapter-sleeve:	-
Positioning rings	
2 per bearing seat	-
:	