

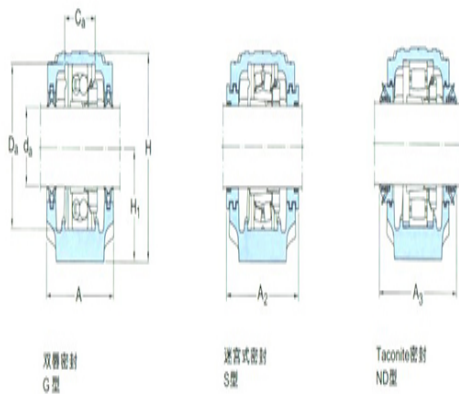
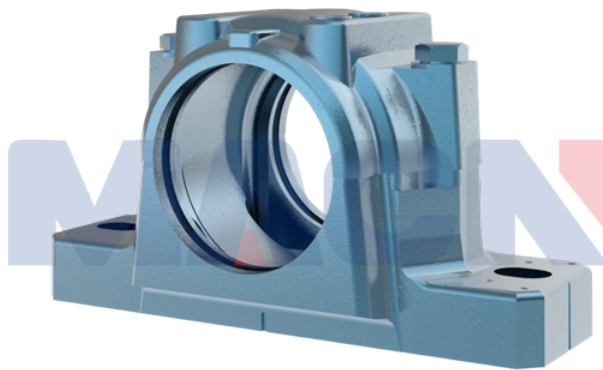
Model: TSN317S

diameter of axle

d_a :	85
---------	----

bearing block

A:	160
A_1 :	110
H:	218
H_1 :	112
H_2 :	40
J:	320
L:	380
N:	32
N_1 :	26
G:	24
quality:	17.6



model

Bearing seat with seals on both sides:	SNL317TS
Component bearing seat:	SNL520-617
seal components:	TSN317S
end cap:	ASNH520-617

diameter of axle

d_a :	90
d_b :	100

Hole

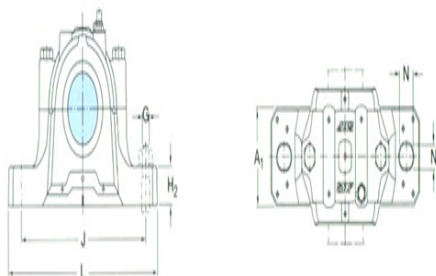
C_a :	65
D_a :	160

Total width of the attached seal

A_2 :	158
A_3 :	220

Applicable bearings and related parts

Automatic centering	1218
---------------------	------



ball bearing	
spherical roller bearing:	
Positioning rings	FRB17.5/16
2 per bearing seat	0
:	
Automatic centering	
ball bearing	2218
spherical roller bearing	
CARB bearing:	
Positioning rings	FRB12.5/16
2 per bearing seat	0
:	