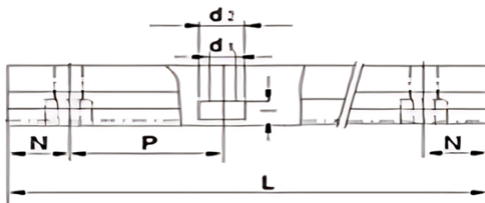
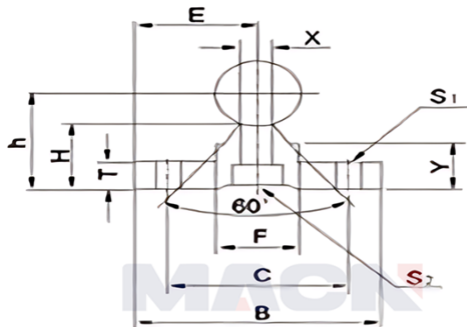
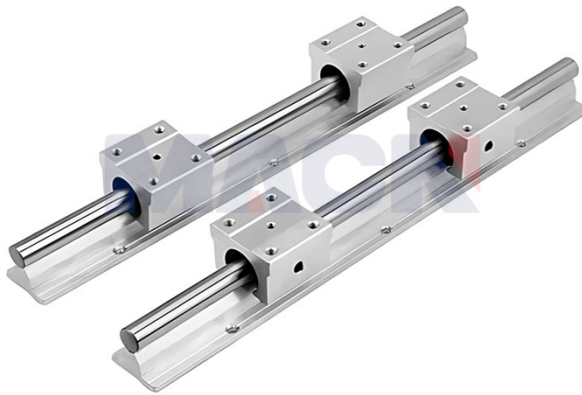


Model: SBR20X340

Param



| | |
|---|-------------|
| model: | SBR20X340 |
| Axial diameter size: | φ20 |
| E: | 22.5 |
| h: | 27 |
| B: | 45 |
| H: | 17.7 |
| T: | 5 |
| F: | 19 |
| X: | 8 |
| Y: | 10 |
| C: | 30 |
| S1: | φ5.5 |
| S2: | 5.5×9.5×5.4 |
| Guide rail support standard length L: | 340 |
| N: | 20 |
| P: | 150 |
| Maximum length of the guide rail support: | 1390 |
| weight: | 1.07 |