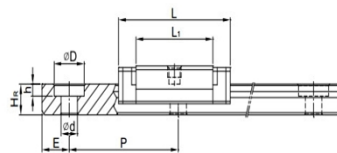
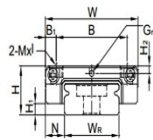


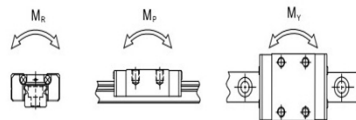
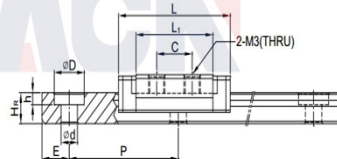
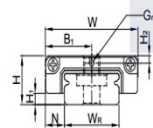


PMW-C

PMW5C



PMW5CL



Model: PMW5CL

Param

Guide rail model:	PMW5CL
Slider special processing:	无
Number type of slider:	单个
Guide rail length L:	100
L computational formula:	$L=(n-1) \times P+2 \times E$ n=1,2,3....
Special processing of guide rail:	无
Pre-pressure grade:	普通间隙(ZF)
accuracy class:	普通(C)
Guide track material:	普通钢
dustproof equipped with grade:	标准防尘配备
Dust equipped with:	标准(刮油片)
Component size:	
H:	6.5
H1:	1.5
N:	3.5
Slider size:	
W:	17
B:	-
B1:	8.5
C:	6.5
L1:	14.1
L:	20.5
Gn:	φ 0.8
MxL:	M3-THRU
H2:	1
Guide track size:	
WR:	10

HR:	4
D:	5.5
h:	1.6
d:	3
P:	20
Standard end distance E:	5
Actual end distance:	10
Number of bolt holes n:	5
Guide rail fixed bolt:	M2.5x7
Rated dynamic load C:	0.68
Rated static load Co:	1.18
Rated static moment MR:	5.5
Rated static moment, MP:	2.7
Rated static moment, MY:	2.7
Slider weight:	0.016
Guide rail weight:	0.34