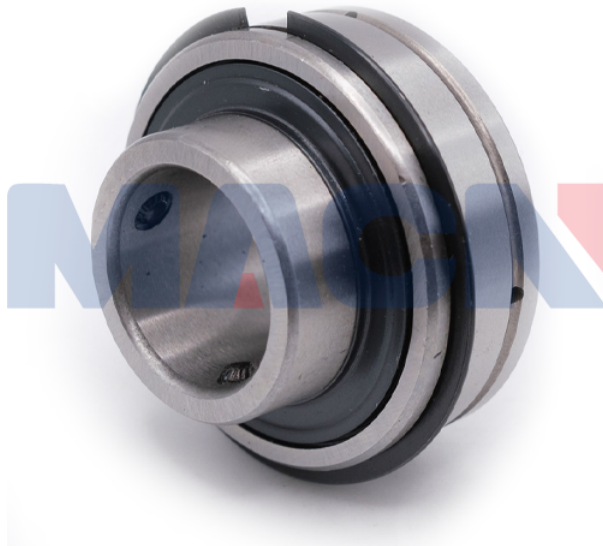


Model: SER204-12

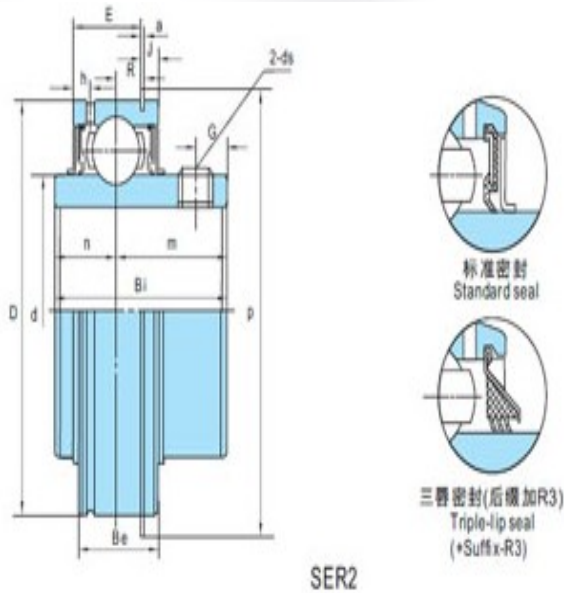


Shaft Dia.

d (in.):	3/4
d (mm):	

Dimensions(mm)(inch)

D:	1.8504
Bi:	1.2205
Be:	0.6260
n:	0.5000
m:	0.7205
E:	0.4760
a:	0.0421
h:	0.1575
R:	0.1630
J:	0.0969
P:	2.0748
G:	0.1969
ds:	



Rated load (KN)

Cr:	1010
Cor:	630

Bearing No.

Bearing No.:	SER204-12
--------------	-----------

Weight(kg)(lb)

Weight(kg)(lb):	
-----------------	--