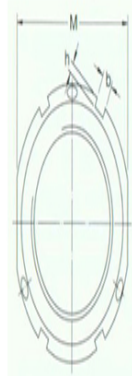
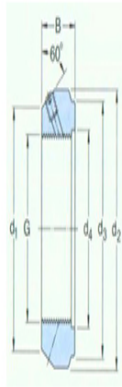




### 型号: KMT22

#### 尺寸

G:	M 110×2
d <sub>1</sub> :	132
d <sub>2</sub> :	145
d <sub>3</sub> :	134
d <sub>4</sub> :	112
B:	32
b:	10
h:	4
M:	
轴向负荷承载能力静态:	800
拧松扭矩:	960
质量:	1.45



#### 型号

锁紧螺母:	KMT22
适用扳手:	HN22

#### 沉头螺钉

尺寸:	M10
建议锁紧扭矩:	35