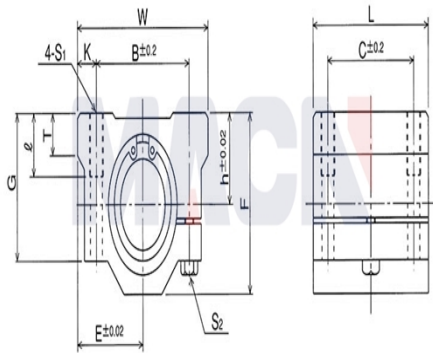
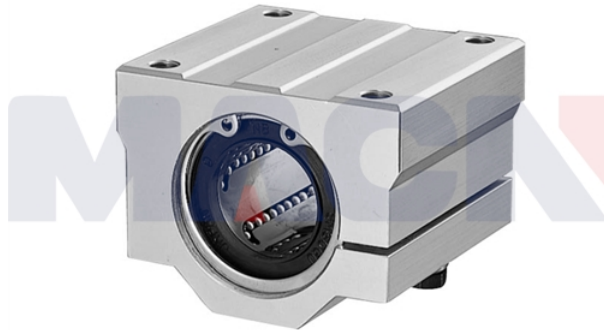


型号: SMJ10GUU

参数



型号:	SMJ10GUU
轴径:	10
h:	13
E:	20
W:	40
L:	35
F:	26
G:	21
T:	8
B:	28
C:	21
K:	6
S1:	M5
S2:	4.3
t:	12
螺栓型号:	M4
滑行衬套型号:	SM10GUU-AJ
动载荷C:	38.0000018049032
静载荷Co:	56.0000026598573
重量:	92