



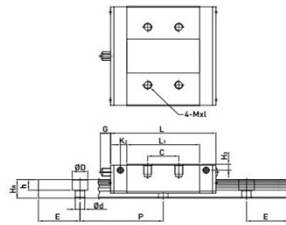
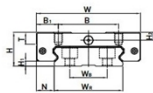
## 型号: WEH17CA

### 参数

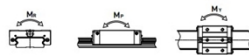
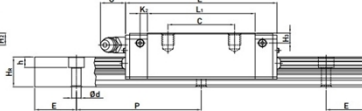
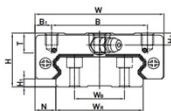
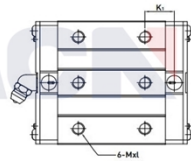
导轨型号:	WEH17CA
滑块特殊加工:	无
滑块数量类型:	单个
导轨长度L:	230
L计算公式:	$L=(n-1) \times P + 2 \times E$ n=1,2,3....
导轨特殊加工:	无
预压等级:	无预压(ZO)
精度等级:	普通(C)
防尘配备等级:	标准防尘配备
防尘配备:	标准(刮油片+防尘片)
RC强化型螺栓盖:	无
组件尺寸:	
H:	17
H1:	2.5
N:	8.5
滑块尺寸:	
W:	50
B:	29
B1:	10.5
C:	15
L1:	35
L:	50.6
K1:	-
K2:	3.1
G:	4.9
MxL:	M4x5
T:	6
H2:	4
H3:	3
导轨尺寸:	
WR:	33
WB:	18
HR:	9.3

WEH-CA

WEH17CA  
WEH21CA



WEH27CA  
WEH35CA  
WEH50CA



D:	7.5
h:	5.3
d:	4.5
P:	40
标准端距E:	15
实际端距:	15
螺栓孔数n:	6
导轨固定螺栓:	M4x12
额定动载荷C:	5.23
额定静载荷Co:	9.64
额定静力矩MR:	0.15
额定静力矩MP:	0.062
额定静力矩MY:	0.062
滑块重量:	0.12
导轨重量:	2.20