

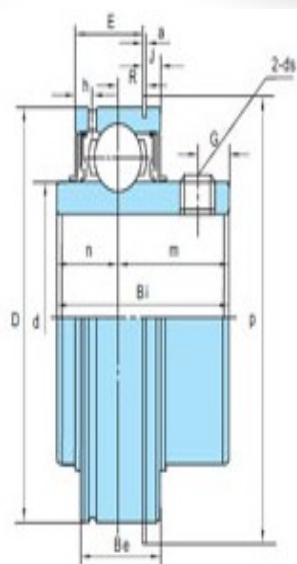
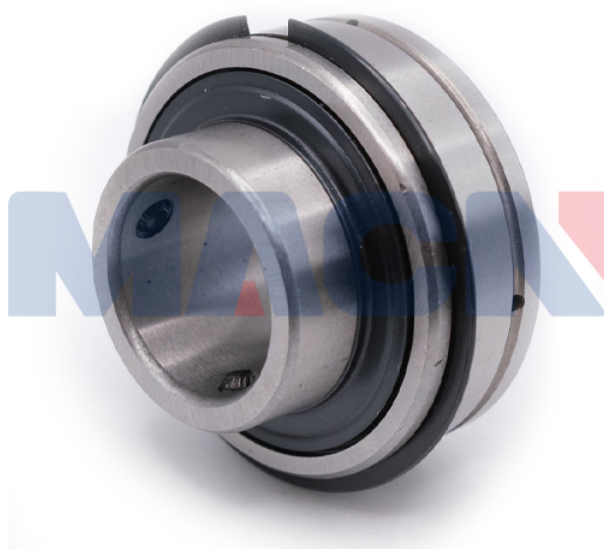
型号: SER212-39

轴径

d (in.):	27/16
d (mm):	

尺寸

D:	4.3307
Bi:	2.5630
Be:	1.2520
n:	1.0000
m:	1.5630
E:	1.0165
a:	0.0949
h:	0.2952
R:	0.3905
J:	0.1291
P:	4.5905
G:	0.4370
ds:	



标准密封
Standard seal



三重密封(后加R3)
Triple-lip seal
(+Suffix-R3)

SER2

额定载荷 (KN)

Cr:	4100
Cor:	3150

轴承型号

轴承型号:	SER212-39
-------	-----------

重量(kg)(lb)

重量(kg)(lb):