

型号: SER212-36

轴径

d (in.): 21/4

d (mm):

尺寸

D: 4.3307

Bi: 2.5630

Be: 1.2520

n: 1.0000

m: 1.5630

E: 1.0165

a: 0.0949

h: 0.2952

R: 0.3905

J: 0.1291

P: 4.5905

G: 0.4370

ds:

额定载荷 (KN)

Cr: 4100

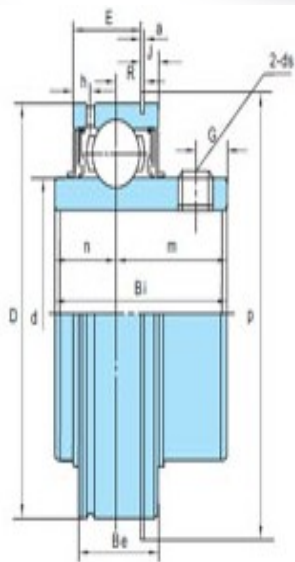
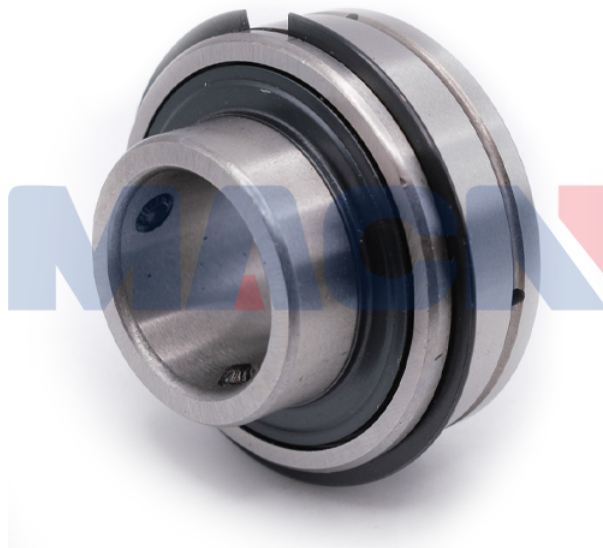
Cor: 3150

轴承型号

轴承型号: SER212-36

重量(kg)(lb)

重量(kg)(lb):



SER2



标准密封
Standard seal



三重密封(后加R3)
Triple-lip seal
(+Suffix-R3)