

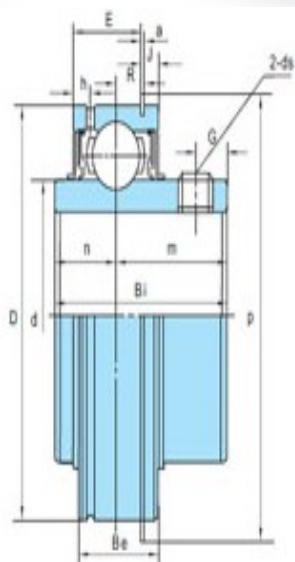
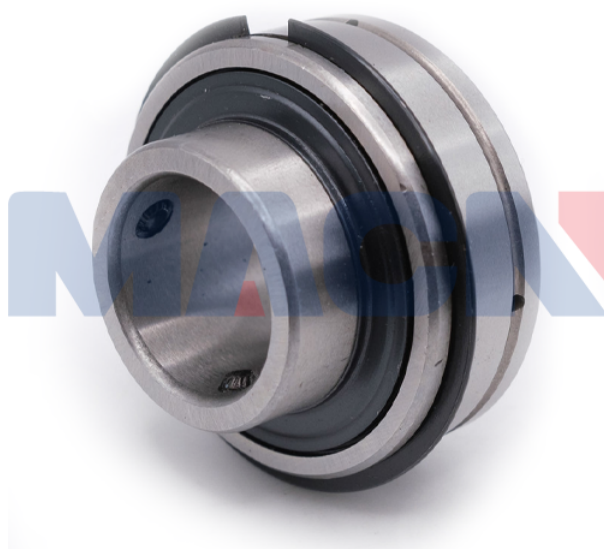
型号: SER212

轴径

d (in.):	
d (mm):	60

尺寸

D:	110
Bi:	65.1
Be:	31.8
n:	25.4
m:	39.7
E:	25.8
a:	2.4
h:	7.5
R:	9.9
J:	3.3
P:	116.6
G:	11.1
ds:	M10X1.0



SER2



标准密封
Standard seal



三重密封(后缀加R3)
Triple-lip seal
(+Suffix-R3)

额定载荷 (KN)

Cr:	4100
Cor:	3150

轴承型号

轴承型号:	SER212
-------	--------

重量(kg)(lb)

重量(kg)(lb):	1.71
-------------	------