

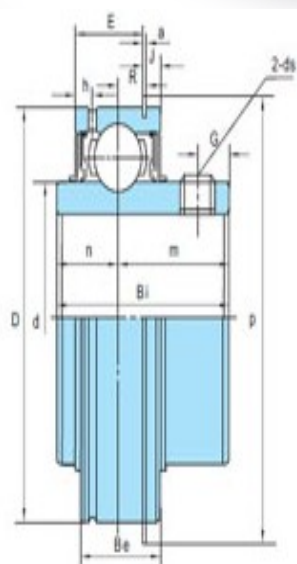
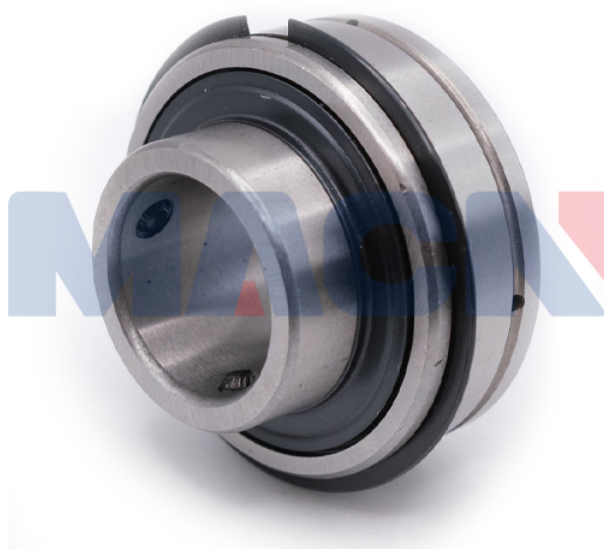
型号: SER208-24

轴径

d (in.):	1 1/2
d (mm):	

尺寸

D:	3.1496
Bi:	1.9370
Be:	1.0945
n:	0.7480
m:	1.1890
E:	0.8905
a:	0.0650
h:	0.2520
R:	0.3433
J:	0.1291
P:	3.4094
G:	0.3150
ds:	



标准密封
Standard seal



三重密封(后加R3)
Triple-lip seal
(+Suffix-R3)

SER2

额定载荷 (KN)

Cr:	2280
Cor:	1590

轴承型号

轴承型号:	SER208-24
-------	-----------

重量(kg)(lb)

重量(kg)(lb):	
-------------	--