

型号: SER206-20

轴径

d (in.): 1 1/4

d (mm):

尺寸

D: 2.4409

Bi: 1.5000

Be: 0.8740

n: 0.6260

m: 0.8740

E: 0.6701

a: 0.0650

h: 0.2205

R: 0.2331

J: 0.1291

P: 2.6654

G: 0.2205

ds:

额定载荷 (KN)

Cr: 1530

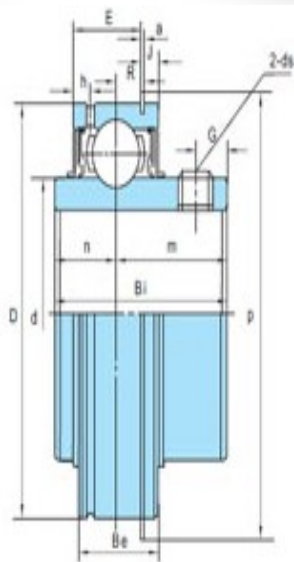
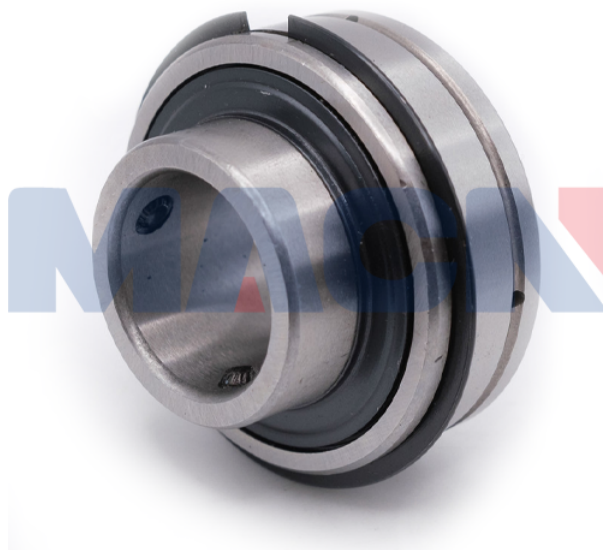
Cor: 1020

轴承型号

轴承型号: SER206-20

重量(kg)(lb)

重量(kg)(lb):



SER2



标准密封
Standard seal



三重密封(后缀加R3)
Triple-lip seal
(+Suffix-R3)