

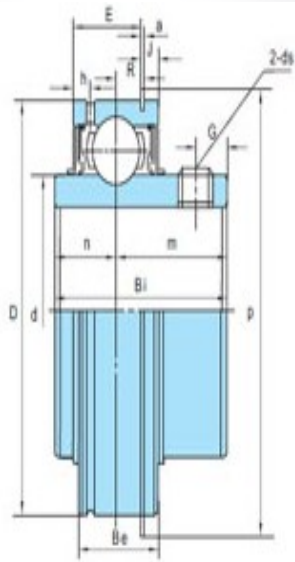
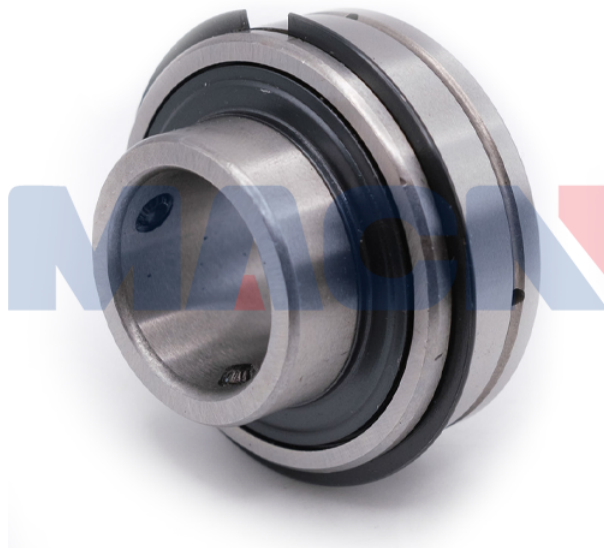
型号: SER201

轴径

d (in.):	
d (mm):	12

尺寸

D:	47
Bi:	31.0
Be:	15.9
n:	12.7
m:	18.3
E:	12.1
a:	1.1
h:	4.0
R:	4.1
J:	2.5
P:	52.7
G:	5.0
ds:	M6X1.0



标准密封
Standard seal



三重密封(后缀加R3)
Triple-lip seal
(+Suffix-R3)

SER2

额定载荷 (KN)

Cr:	1010
Cor:	630

轴承型号

轴承型号:	□SER201
-------	---------

重量(kg)(lb)

重量(kg)(lb):	0.22
-------------	------